



GEORGETOWN **GT3**

BY FOREST RIVER

3 SERIES DIMENSIONS & CAPACITIES

GVWR (Gross Vehicle Weight Rating) is the maximum permissible weight of the unit when fully loaded. It includes all weights, inclusive of all fluids, occupants, cargo, optional equipment and accessories. For safety and product performance do NOT exceed the GVWR.

GCWR (Gross Combined Weight Rating) is the maximum permissible loaded weight of your motor home and any towed trailer or towed vehicle. Actual GCWR of this vehicle may be limited by the sum of the GVWR and the installed hitch receiver maximum capacity rating; see hitch rating label for detail.

GAWR (Gross Axle Weight Rating) is the maximum permissible weight, including cargo, fluids, optional equipment and accessories that can be safely supported by each axle.

UVW (Unloaded Vehicle Weight)* is the typical weight of the unit as manufactured at the factory. It includes all weight at the unit's axle(s), including full fuel, all fluids and LP Gas. The UVW does not include cargo, fresh potable water, additional optional equipment or dealer installed accessories.

*Estimated Average based on standard build optional equipment.

CCC (Cargo Carrying Capacity)** is the amount of weight available for fresh potable water, cargo, passengers, additional optional equipment and accessories. CCC is equal to GVWR minus UVW. Available CCC should accommodate fresh potable water (8.3 lbs per gallon). Before filling the fresh water tank, empty the black and gray tanks to provide for more cargo capacity.

** Estimated average based on standard build optional equipment

Each Forest River RV is weighed at the manufacturing facility prior to shipping. A label identifying the unloaded vehicle weight of the actual unit and the cargo carrying capacity is applied to every Forest River RV prior to leaving our facilities.

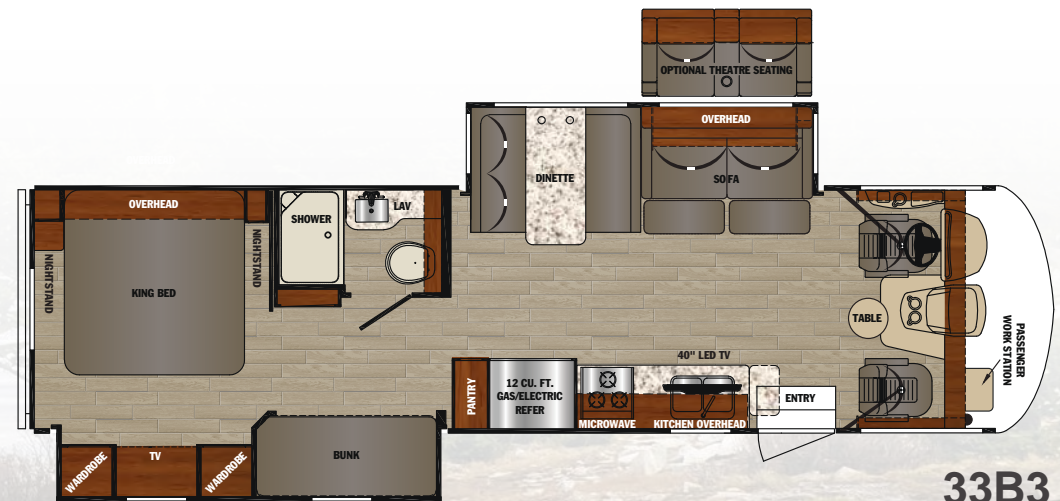
The load capacity of your unit is designated by weight, not by volume, so you cannot necessarily use all available space when loading your unit.

Actual towing capacity is dependent upon your particular loading and towing circumstances, which includes the GVWR, GAWR and GCWR as well as adequate trailer brakes. Please refer to the Operator's Manual of your vehicle for further towing information.

	30X3	33B3
Chassis	Ford F53	Ford F53
Engine	V-10	V-10
Horsepower	320 HP	320 HP
Torque (ft-lbs)	460	460
Wheelbase	190"	228"
Fuel Capacity (gal)	80	80
GVWR (lbs)	18,000	20,500
GCWR (lbs)	23,000	26,000
GAWR Front (lbs)	7,000	7,500
GAWR Rear (lbs)	12,000	13,500
Exterior Storage (cu ft)	133	156
LP Tank (gal)	24.5	24.5
Fresh Water (gal)	50	50
Water Heater (gal)	6	6
Grey Tank (gal)	42	42
Black Tank (gal)	42	42
Length	31' 11"	34' 6"
Exterior Width	99.5"	99.5"
Exterior Height	12' 3"	12' 3"
Interior Width	95.5"	95.5"
Interior Height	82"	82"
Awning Length	20'	12'
Furnace (BTU)	35K	35K



30X3



33B3

3 SERIES STANDARDS & OPTIONS

STANDARDS

One Piece Fiberglass Roof
 Custom Countertops Throughout
 Undermount Stainless Steel Kitchen Sink
 Fiberglass Front Cap w/ Back-lit Logo, LED Accent Lights and Automotive Bonded Front Windshield
 Power Patio Awning w/ LED Light **Chrome Package:**
 Chrome Headlight Bezels
 Chrome Foglight Bezels
 Chrome Mirrors
 Slideout Room Awning(s)
 Stainless Steel Bathroom Sink
 Dream Dinette
 "SUPER STORAGE" Rear Cargo Compartment
 30" Wide Entrance Door
 Outside Shower
 Flush Floor Construction Throughout
 Rotocast Storage Compartments w/ Drains
 Rear Roof Ladder
 Remote/Heated Exterior Mirrors
 Outside Entertainment Center w/ 32" LED TV
 Pioneer Dash Entertainment System w/ AM/FM/DVD/Bluetooth/USB
 Rubber Tread Entry Steps
 Custom Cockpit Dash w/ ABS Side Consoles, Drink Holders, 110V Outlet/USB
 Low Profile Engine Cover w/ Drink Holders
 Adjustable 3 Point Seat Belts
 Deluxe Driver Passenger Seating
 Hide-A-Bed Sofa w/ Footrests

Night Shades Throughout
 40" LED Main TV
 Full Extension Ball Bearing Drawer Guides
 Heated and Enclosed Holding Tanks w/ Arctic Package
 Pocket Door To Bedroom
 32" LED Bedroom TV w/ Flip Up
 Bedside Nightstands w/ 12V and USB
 5000 lbs. Tow Hitch w/ 7-Way Plug
 Dual Coach Batteries
 Hydraulic 4-Point Leveling Jacks
 Color Side and Rear Camera Package
 Black Water Tank Flush
 Driver/Passenger LED Map Lights
 LED Bunk Accent Lights
 (2) High Output Quiet Air Command™ Ducted Roof A/Cs w/ Chill Construction and (1) Heat Pump
 KING Jack™ Digital TV Antenna w/ Mount & Built-in Signal Meter
 Solar Prep
 6 Gallon Gas/Electric Water Heater
 5.5 KW Onan Generator
 50 AMP Service
 Auto Transfer Switch
 Vacuum Bonded Gel Coated Sidewalls w/ Graphics
 Steel Front Cockpit Cage
 Triple Electric Entrance Step
 Rubberized Entry Assist Handle (exterior)
 Stainless Steel Entry Assist Handle (interior)
 Power Front Sun Shade
 Manual Cockpit Side Sun Shades
 Passenger Side Workstation
 Diamond Plate Rubber Floor Covering (driver area)

Shaw Residential Vinyl Flooring
 3-Burner Cooktop w/ Oven and Flush Mount Glass Stove Cover
 Flip-up Countertop Extension
 Emergency Start Switch
 Quick Connect Exterior LP Fitting

POPULAR OPTIONS

Manual Front Overhead Bunk
 P2K Power Front Overhead Bunk
 MaxxAir Power Fan
 Manual Theatre Seating

CABINETRY

Landis Ash
 Raised Panel Solid Wood Cabinet Doors

INTERIOR DÉCOR OPTIONS

Café
 Sand Castle
 Granite

EXTERIOR OPTIONS

Champagne Colored Exterior Gel Coat

CUSTOMER SATISFACTION



www.ForestRiverBuyLocal.com

FREE MEMBERSHIP
 to Forest River Owners' Group

www.forestriverfrog.com



For more information on Coach-Net, scan here.



GEORGETOWN BY FOREST RIVER GT3

For more information visit
www.forestriverinc.com/gt3

Forest River, Inc.
 Georgetown Division
 902 County Road 1
 Elkhart, IN 46515
 (574) 367.3285



YOUR GT3 DEALER



Learn More
 Scan this barcode using a QR Reader on your smart phone to learn more about Forest River.



A Berkshire Hathaway company.

All information contained in this brochure is believed to be accurate at the time of publication. However, during the model year, it may be necessary to make revisions and Forest River, Inc., reserves the right to make all such changes without notice, including prices, colors, materials, equipment and specifications as well as the addition of new models and the discontinuance of models shown in this brochure. Therefore, please consult with your Forest River, Inc., dealer and confirm the existence of any materials, design or specifications that are material to your purchase decision. 9/18

©2018 GT3

a Division of Forest River, Inc., a Berkshire Hathaway company. All Rights Reserved.



GEORGETOWN **GT5**

BY FOREST RIVER

GVWR (Gross Vehicle Weight Rating) is the maximum permissible weight of the unit when fully loaded. It includes all weights, inclusive of all fluids, occupants, cargo, optional equipment and accessories. For safety and product performance do NOT exceed the GVWR.

GCWR (Gross Combined Weight Rating) is the maximum permissible loaded weight of your motor home and any towed trailer or towed vehicle. Actual GCWR of this vehicle may be limited by the sum of the GVWR and the installed hitch receiver maximum capacity rating; see hitch rating label for detail.

GAWR (Gross Axle Weight Rating) is the maximum permissible weight, including cargo, fluids, optional equipment and accessories that can be safely supported by each axle.

UVW (Unloaded Vehicle Weight)* is the typical weight of the unit as manufactured at the factory. It includes all weight at the unit's axle(s), including full fuel, all fluids and LP Gas. The UVW does not include cargo, fresh potable water, additional optional equipment or dealer installed accessories.

*Estimated Average based on standard build optional equipment.

CCC (Cargo Carrying Capacity)** is the amount of weight available for fresh potable water, cargo, passengers, additional optional equipment and accessories. CCC is equal to GVWR minus UVW. Available CCC should accommodate fresh potable water (8.3 lbs per gallon). Before filling the fresh water tank, empty the black and gray tanks to provide for more cargo capacity.

** Estimated average based on standard build optional equipment

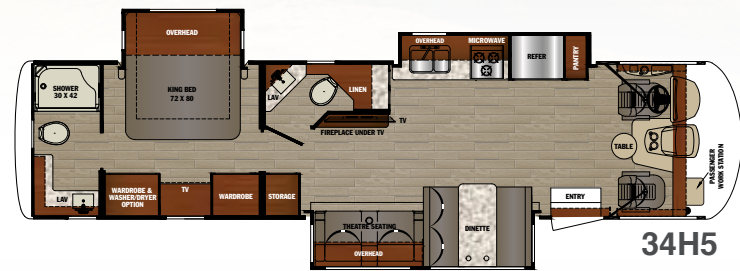
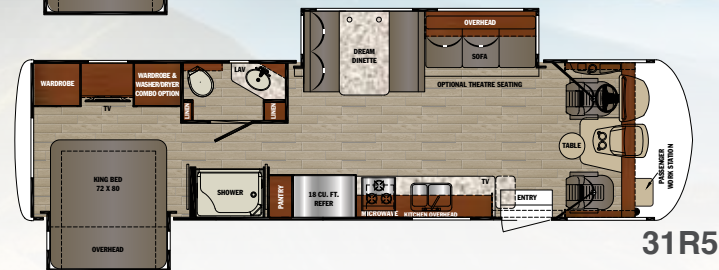
Each Forest River RV is weighed at the manufacturing facility prior to shipping. A label identifying the unloaded vehicle weight of the actual unit and the cargo carrying capacity is applied to every Forest River RV prior to leaving our facilities.

The load capacity of your unit is designated by weight, not by volume, so you cannot necessarily use all available space when loading your unit.

Actual towing capacity is dependent upon your particular loading and towing circumstances, which includes the GVWR, GAWR and GCWR as well as adequate trailer brakes. Please refer to the Operator's Manual of your vehicle for further towing information.

5 SERIES DIMENSIONS & CAPACITIES

	31L5	31R5	34H5	36B5
Chassis	Ford F53	Ford F53	Ford F53	Ford F53
Engine	V-10	V-10	V-10	V-10
Horsepower	320 HP	320 HP	320 HP	320 HP
Torque (ft.-lbs)	460	460	460	460
Wheelbase	208"	208"	242"	242"
Fuel Capacity (gal)	80	80	80	80
GVWR (lbs)	20,500	20,500	22,000	22,000
GCWR (lbs)	26,000	26,000	26,000	26,000
GAWR Front (lbs)	7,500	7,500	8,000	8,000
GAWR Rear (lbs)	13,500	13,500	15,000	15,000
Exterior Storage (cu ft)	136	136	157	161
LP Tank (gal)	24.5	24.5	24.5	24.5
Fresh Water (gal)	82	82	82	82
Water Heater (gal)	6	6	6	6 + 6 = 12
Grey Tank (gal)	42	42	52	42 + 42 = 84
Black Tank (gal)	42	42	52	42 + 42 = 84
Length	34' 11"	34' 11"	37' 11"	37' 11"
Exterior Width	99.5"	99.5"	99.5"	99.5"
Exterior Height	12' 3 1/2"	12' 3 1/2"	12' 5 1/2"	12' 5 1/2"
Interior Width	95.5"	95.5"	95.5"	95.5"
Interior Height	82"	82"	82"	82"
Awning Length	19'	19'	17' & 12'	12' 6"
Furnace (BTU)	35K	35K	35K	35K/20K
Safety Belts	6	6	6	8



5 SERIES FULL BODY PAINT OPTIONS



MERLOT



SOLSTICE



SEMINOLE



MIDNITE

5 SERIES STANDARDS & OPTIONS

STANDARDS

CHROME PACKAGE

Chrome Headlight Bezels
 Chrome Foglight Bezels
 Chrome Mirrors & Logos
 One Piece Fiberglass Roof
 Undermount Stainless Steel Kitchen Sink
 Stainless Steel Faucet w/Pull Out Sprayer
 Automotive Bonded Front Windshield
 Fiberglass Front Cap w/Lighted Logo,
 LED Accent Lights and Automotive
 Bonded Front Windshield
 Slam Latch Side Hinge Baggage Doors
 Encased Power Patio Awning w/LED Light
 Slideout Room Awning(s)
 Stainless Steel Bathroom Sink
 Washer Dryer Combo Prep
 Dream Dinette
 Super Size Dinette (31L5, 31R5)
 "SUPER STORAGE" Rear Cargo Compartment
 30" Wide Entrance Door
 Outside Shower
 Flush Floor Construction Throughout
 Grey Rotocast Storage Compartments w/Drains
 2000 Watt Inverter System
 Rear Roof Ladder
 Pioneer Dash Entertainment System
 w/AM/FM/DVD/Bluetooth/USB
 Rubber Tread Entry Steps
 Custom Cockpit Dash w/ABS Side Consoles,
 Drink Holders, 110V Outlet/USB
 Low Profile Engine Cover w/Drink Holders
 Adjustable 3 Point Seat Belts
 Power Driver's Seat
 Hide-A-Bed Sofa w/Footrests (31R5, 36B5)
 Power Theatre Seats (31L5, 34H5)
 MCD Roller Shades Throughout
 40" LED Main TV
 Full Extension Ball Bearing Drawer Guides
 Heated and Enclosed Holding Tanks
 w/Arctic Package
 Quick Latch Pocket Door To Bedroom
 32" LED Bedroom TV w/Flip Up
 5000 lbs. Tow Hitch w/7-Way Plug
 Dual Coach Batteries
 Electric Battery Disconnect
 Hydraulic 4-Point Leveling Jacks
 Color Side and Rear Camera Package
 One-way Audio on Backup Camera
 Black Tank Flush
 LED Map, Bunk and Accent Lights
 (2) High Output Quiet Air Command™
 Ducted Roof A/C w/Chill Construction
 and (1) Heat Pump
 KING Jack™ Digital TV Antenna
 w/Mount & Built-in Signal Meter
 6 Gallon Gas/Electric Water Heater (x2 36B5)
 5.5 KW Onan Generator
 Vacuum Bonded Gel Coated Sidewalls
 w/Graphics and Partial Paint
 Steel Front Cockpit Cage
 Triple Electric Entrance Step
 Rubberized Entry Assist Handle (exterior)
 Stainless Steel Entry Assist Handle (interior)
 Power Front Sun Shade
 Manual Cockpit Side Sun Shades
 Passenger Side Workstation

MyRV™ Touch Screen w/Wireless Technology
 Diamond Plate Rubber Floor Covering (driver area)
 Shaw Residential Vinyl Flooring
 18 cu. ft. Stainless Steel Gas/Electric
 Norcold Refrigerator
 Stainless Steel 3-Burner Cooktop
 w/Oven and Flush Mount Glass Stove Cover
 Solid Surface Countertops
 Flip-up Solid Surface Countertop Extension
 Emergency Start Switch
 Enclosed Quick Connect Exterior LP Fitting
 King Bed (72" x 80")
 One Piece Fiberglass Shower

POPULAR OPTIONS

Manual Front Overhead Bunk
 P2K Power Front Overhead Bunk
 Convection Microwave w/Oven
 Dual Pane Windows
 Front Mount TV (N/A w/Front Overhead Bunk)
 Exterior Cargo Tray
 Washer Dryer Combo
 7.0 KW Onan Generator
 Full Body Paint
 Power Theatre Seats (31R5, 36B5)
 (Standard on 31L5, 34H5)

EXTERIOR OPTIONS

Steel Partial Paint Package
 Black Partial Paint Package

FULL BODY PAINT OPTIONS

Merlot
 Solstice
 Seminole
 Midnite

CABINERY

Landis Ash
 Raised Panel Solid Wood Cabinet Doors
 w/Hidden Hinges

INTERIOR DÉCOR OPTIONS

Café
 Sand Castle
 Granite

CUSTOMER SATISFACTION



www.ForestRiverBuyLocal.com

FREE MEMBERSHIP
 to Forest River Owners' Group

www.forestriverfrog.com

All information contained in this brochure is believed to be accurate at the time of publication. However, during the model year, it may be necessary to make revisions and Forest River, Inc., reserves the right to make all such changes without notice, including prices, colors, materials, equipment and specifications as well as the addition of new models and the discontinuance of models shown in this brochure. Therefore, please consult with your Forest River, Inc., dealer and confirm the existence of any materials, design or specifications that are material to your purchase decision. 8/18

©2018 GT5

a Division of Forest River, Inc., a Berkshire Hathaway company. All Rights Reserved.



GEORGETOWN BY FOREST RIVER GT5

For more information visit
www.forestriverinc.com/gt5

Forest River, Inc.
 Georgetown Division
 902 County Road 1
 Elkhart, IN 46515
 (574) 367.3285



YOUR GT5 DEALER



For more information on
 Coach-Net, scan here.



Learn More
 Scan this barcode using
 a QR Reader on your
 smart phone to learn
 more about Forest River.



A Berkshire Hathaway company.



Georgetown XL

GVWR (Gross Vehicle Weight Rating) is the maximum permissible weight of the unit when fully loaded. It includes all weights, inclusive of all fluids, occupants, cargo, optional equipment and accessories. For safety and product performance do NOT exceed the GVWR.

GCWR (Gross Combined Weight Rating) is the maximum permissible loaded weight of your motor home and any towed trailer or towed vehicle. Actual GCWR of this vehicle may be limited by the sum of the GVWR and the installed hitch receiver maximum capacity rating; see hitch rating label for detail.

GAWR (Gross Axle Weight Rating) is the maximum permissible weight, including cargo, fluids, optional equipment and accessories that can be safely supported by each axle.

UVW (Unloaded Vehicle Weight)* is the typical weight of the unit as manufactured at the factory. It includes all weight at the unit's axle(s), including full fuel, all fluids and LP Gas. The UVW does not include cargo, fresh potable water, additional optional equipment or dealer installed accessories.

*Estimated Average based on standard build optional equipment.

CCC (Cargo Carrying Capacity)** is the amount of weight available for fresh potable water, cargo, passengers, additional optional equipment and accessories. CCC is equal to GVWR minus UVW. Available CCC should accommodate fresh potable water (8.3 lbs per gallon). Before filling the fresh water tank, empty the black and gray tanks to provide for more cargo capacity.

** Estimated average based on standard build optional equipment

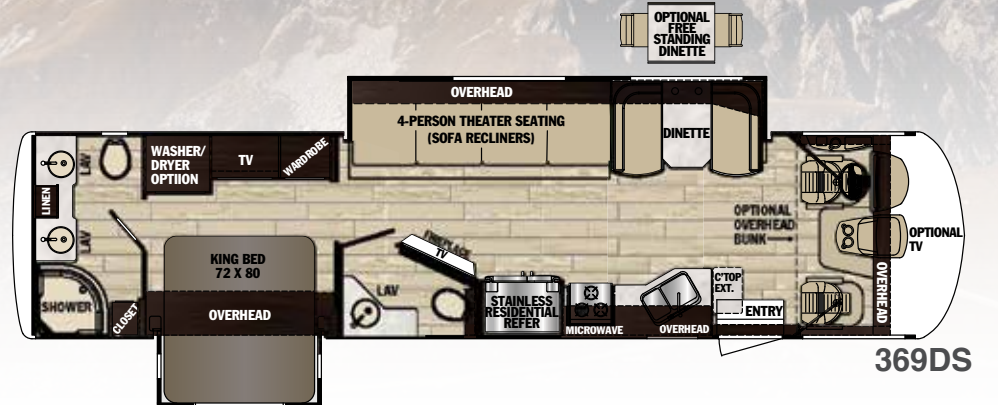
Each Forest River RV is weighed at the manufacturing facility prior to shipping. A label identifying the unloaded vehicle weight of the actual unit and the cargo carrying capacity is applied to every Forest River RV prior to leaving our facilities.

The load capacity of your unit is designated by weight, not by volume, so you cannot necessarily use all available space when loading your unit.

Actual towing capacity is dependent upon your particular loading and towing circumstances, which includes the GVWR, GAWR and GCWR as well as adequate trailer brakes. Please refer to the Operator's Manual of your vehicle for further towing information.

XL DIMENSIONS & CAPACITIES

	369DS	378TS
Chassis	Ford F53	Ford F53
Engine	V-10	V-10
Horsepower	320 HP	320 HP
Torque (ft.-lbs)	460	460
Wheelbase	242"	242"
Fuel Capacity (gal)	80	80
GVWR (lbs)	24,000	24,000
GCWR (lbs)	30,000	30,000
GAWR Front (lbs)	9,000	9,000
GAWR Rear (lbs)	15,500	15,500
Exterior Storage (cu ft)	190	198
LP Tank (gal)	24	24
Fresh Water (gal)	65	65
Water Heater (gal)	10	10
Grey Tank (gal)	84	42
Black Tank (gal)	84	42
Length	37' 11"	37' 4"
Exterior Width	101"	101"
Exterior Height	12' 8"	12' 8"
Interior Width	95 1/2"	95 1/2"
Interior Height	84"	84"
Awning Length	17'	20'
Furnace (BTU)	35K	35K & 20K



XL FULL BODY PAINT OPTIONS

MERLOT

SOLSTICE

SEMINOLE

MIDNITE



XL STANDARDS & OPTIONS

STANDARDS

Full Body Paint
 24,000 lb. GVWR Ford F-53 Chassis
 Rotocast One-Piece Storage Compartments w/Drains
 Flush Floor Construction Throughout
 Cable TV Jack
 Automotive Bonded Front Windshield
 LED Clearance and Taillights
 4 Coach Batteries
 Day/Night Roller Shades Throughout
 Triple Electric Entrance Step
 5,000 lb. Tow Hitch w/7-Way Plug
 Automatic Hydraulic Leveling Jacks
 Rear Ladder
 Outside Shower
 Slideout Room Awning(s)
 Encased Power Patio Awning w/LED Light Strip
 30" Entrance Door
 Remote Heated Mirrors
 King Jack Digital TV Antenna w/Mount and Built-in Signal Meter
 22.5" Tires w/Polished Aluminum Wheels
 Insulated, Formed One-Piece Slam Latch, Side Hinge Baggage Doors
 3" Laminated, Steel Framed Floor w/Ducted Heating Laminated Aluminum Framed Sidewalls, Roof (Including all openings)
 Custom Cockpit Dash w/ABS Side Consoles, Drink Holders, 110V/USB Outlets
 Steel Front Cockpit Cage
 Under Floor Steel Truss System
 Diamond Plate Rubber Floor Covering (Driver and Passenger Area)
 6-Way Power Driver's Seat w/Power Footrest
 Passenger Seating w/Power Footrest
 Solid Wood Cockpit Table
 Auxiliary Start Switch
 Defroster Fans
 Power Front Sun Visor and Manual Side Shades
 Driver/Passenger LED Map Lights
 Soft Touch Vinyl Ceiling
 Upgraded Interior LED Lighting Package
 Pioneer Dash Entertainment System w/AM/FM/DVD/Bluetooth/USB
 Radio Power Selector Switch
 Color Rear Vision Camera w/Monitor & Audio
 Color Side and Rear Cameras
 Enclosed Quick Connect Exterior LP Fitting
 90 Sheen High Gloss Solid Wood Amish Cabinetry
 Raised Panel Cabinet Doors w/Hidden Hinges and Brushed Nickel Grab Handles and Pulls

STAINLESS PACKAGE:

Stainless Steel Residential 20 cu. ft. Refrigerator w/Water and Ice Maker
 Furron Commercial Grade Stainless Cooktop w/Sealed Burners and Removable Cast Iron Grates
 Residential Tile Backsplash
 Solid Surface Kitchen Countertop w/Sink Cover
 Solid Surface Countertop Flip-up Extension
 Under Mount Stainless Steel Sink w/Pull-out Sprayer
 Flush Mount LED Ceiling and Accent Lighting
 Carpet Free Step Well
 Satellite Prep
 Full Extension Ball Bearing Drawer Guides
 Slide Out Pantry
 40" LED TV w/Home Theater (369)

50" LED TV w/Home Theater (378)
 Electric Fireplace
 Power Theater Seating
 Comfort Dinette
 Upgraded Window Treatments w/Solid Wood Inserts
 10 Gallon Gas/Electric Water Heater w/DSI
 White Porcelain Vessel Bathroom Sinks w/Euro Plumbing Fixtures
 Dual Control Shower Faucet w/Flex Head
 Medicine Cabinet
 Porcelain Toilet w/Foot Flush
 Black Tank Flush System
 Upgraded Bathroom Light Bars
 Shower Skylight
 Towel Bar
 Combo Washer/Dryer Prep
 Frosted Glass Shower Door w/Brushed Nickel Hardware
 60" x 80" Island Queen Bed w/Bedsread, Headboard, Pillow Shams and Storage Below (378)
 72" x 80" King Bed w/Bedsread, Headboard, Pillow Shams and Storage Below (369)
 Radius Corner Mattress and Bed Base
 Oversized Wardrobe w/Pullout Drawers
 32" LED Bedroom TV
 110V GFI Protected Circuit (Kitchen, Bath, Exterior)
 Automatic Transfer Switch
 Carbon Monoxide Detector
 Exit Window
 LPG Detector
 Smoke Alarm
 Adjustable 3-Point Seat Belts
 Recess Mounted Fire Extinguisher (Inside Entry Door)
 50 Amp 120V Distribution Panel and Cord
 70 Amp 12V Power Converter
 Power Vent in Kitchen
 Arctic Package w/Heated and Enclosed Holding Tanks
 Whole House Water Filtration System
 35,000 BTU Furnace (369)
 Two Furnaces (35,000 and 20,000 BTU) (378)
 Battery Disconnect
 7.0KW Onan Generator
 Power Ceiling Fan in Bath
 15,000 A/C w/Heat Strip (Front)
 13,500 A/C w/Heat Strip (Rear)
 One-Piece Fiberglass Roof

POPULAR OPTIONS

Outside Entertainment Center
 Front Mount 32" TV (N/A w/Front Overhead Bunk)
 Front Overhead Bunk
 Free Standing Dinette w/4 Chairs (Std. on 378)
 Driver's Side Door
 Rear Mud Flap
 Dual Pane Windows
 Dishwasher (369 only)
 Washer/Dryer Combo

FULL BODY PAINT OPTIONS

Merlot
 Solstice
 Seminole
 Midnite

CABINETRY

90 Sheen High Gloss Amish Solid Wood
 Raised Panel Solid Wood Cabinet Doors
 w/Hidden Hinges

INTERIOR DÉCOR OPTIONS

Café
 Sand Castle
 Granite

Georgetown XL

For more information visit
www.forestriverinc.com/xl

Forest River, Inc.
 Georgetown Division
 902 County Road 1
 Elkhart, IN 46515
 (574) 367.3285



YOUR XL DEALER

LAMESA REC VAN

LaMesaRV.com
 800-496-8778

24/7 EMERGENCY ROADSIDE ASSISTANCE

For a worry-free ownership experience Forest River includes one year of Coach-Net RV Technical & Roadside Assistance with each RV purchase. Whether new to the RV lifestyle or an experienced RV enthusiast, Forest River owners have 24/7 access to technical, operational and emergency road service coverage throughout the US & Canada. Coach-Net's fast, dependable service is just a phone call away.

Coach-Net®



For more information on Coach-Net, scan here.

CUSTOMER SATISFACTION



www.ForestRiverBuyLocal.com

FREE MEMBERSHIP
 to Forest River Owners' Group

www.forestriverfrog.com



All information contained in this brochure is believed to be accurate at the time of publication. However, during the model year, it may be necessary to make revisions and Forest River, Inc., reserves the right to make all such changes without notice, including prices, colors, materials, equipment and specifications as well as the addition of new models and the discontinuance of models shown in this brochure. Therefore, please consult with your Forest River, Inc., dealer and confirm the existence of any materials, design or specifications that are material to your purchase decision. 8/18

©2018 XL

a Division of Forest River, Inc., a Berkshire Hathaway company. All Rights Reserved.



Learn More
 Scan this barcode using a QR Reader on your smart phone to learn more about Forest River.



A Berkshire Hathaway company.